



INSTRUCTION MANUAL

OIL FILLED RADIATOR

Model No.: OFR 3211F PTC





Dear Customer,

Congratulations!

You are now the proud owner of Usha Oil Filled Radiator (Model No.: OFR 3211F PTC)

Innovatively designed, using only the highest quality material and components, your Usha Oil Filled Radiator (Model No.: OFR 3211F PTC) is designed for years of trouble free performance.

Please read this Instruction Manual carefully before using and keep it cautiously after reading for future reference.

Best Wishes

IMPORTANT PRECAUTIONS

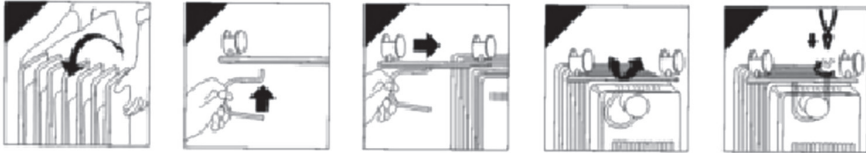
1. Read the instructions carefully before use and save them for future reference.
2. Always disconnect the heater from the main supply when not in use and when cleaning.
3. Do not leave the heater “ON” unattended.
4. Never cover the heater as this may lead to risk of fire.
5. Keep the heater a distance of at least 90cm from any combustible material, such as furniture, curtains, bedding clothes or papers.
6. Keep the heater clean. Do not allow objects to enter the ventilation, as this may cause electric shock, fire or damage the heater.
7. Close supervision is required when any appliance is used near or by children.
8. Never allow the cord to touch wet or hot surfaces, become twisted or be within the reach of children.
9. Do not use outdoors.
10. Do not place on or near a hot gas or electric burner.
11. Never use the appliance with a damaged cord or plug or after the appliance has malfunctioned or been damaged in any way.
12. Never attempt to open any part or dismantle the controls. Responsibility for failure cannot be accepted if these instructions have been ignored.
13. Do not use the appliance for anything other than its intended use.
14. This appliance is intended for household use only.
15. Regulations concerning the disposal of the oil when scraping the appliance have to be followed.
16. Any repairs that need to be done to the heater must be referred to an Usha authorized service centre.
17. The appliance is not intended for use by young children or infirm persons without supervision.
18. Young children should be supervised to ensure that they do not play with the appliance.
19. If the supply cord is damaged, it must be replaced by the Usha authorised service centre.

20. The heater must not be located immediately below a socket-outlet.
21. Do not use this heater in the immediate surroundings of a bath, a shower or a swimming pool.
22. This heater is filled with a precise quantity of special oil. Repairs requiring opening of the oil container are only to be made by the Usha authorised service centre, if there is an oil leakage. Regulations concerning the disposal of the oil when scrapping the appliance has to be followed.

ASSEMBLY

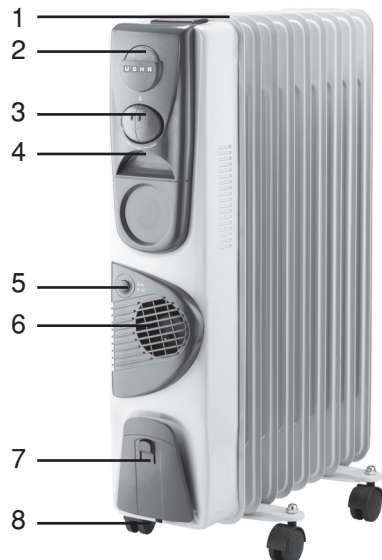
Remove the heater and all the accessories from the carton.

1. Turn the heater upside down.
2. Position the wheel base assemblies between the end fins.
3. Attach them to the heater using the U-bolts and wing nuts supplied.
4. Tighten the wing nuts.
5. Turn the heater the right way up.



PARTS DESCRIPTION

1. Oil filled fins
2. Thermostat control
3. Power setting switch
4. Handle
5. Turbo switch
6. Turbo
7. Cord storage
8. Castors



OPERATING YOUR OIL FILLED RADIATOR

Place the heater on the floor at least 90cm away from the wall and any other objects such as furniture, Curtains or plants.

(Make sure the power supply used corresponds to the one on the rating label)

With the thermostat control switch in the "O" position and the power setting switches in the "OFF" Position; plug the heater into the main power supply.

OPERATION

1. Room temperature can be adjusted using the thermostat. Simply turn the thermostat knob clockwise, to increase the heat, and anti-clockwise to decrease the temperature, until you reach the desired temperature.

2. Switch the heater to one of the following power settings.

- 11 fins: Push switch one (I) for 1000W
- Push switch two (II) for 1500W
- Push switch one & two (I&II) for 2500W
- Fan heater for 400W

3. The power switch lights up when activated.

4. TURBO HEATING

This model is fitted with a heating fan which heats the room more quickly.

To turn this function on, push the button into the position.

Important a safety device cuts in and switches off the appliance if it overheats due to an accumulation of dust on the air intake and output grills. To restart it, unplug from the mains and leave the appliance to cool down. Clean the air intake and output grills with a vacuum cleaner, then replug into the mains and turn on again.

5. Turning the thermostat control clockwise will increase the "set" temperature.

6. Turning the thermostat anti-clockwise will decrease the "set" temperature.

7. Do not cover the heater at any time during operation. There is a risk of fire if the heater is covered.

8. Once you have finished using your heater, turn the power switches off, and the thermostat control switch to the "0" positions, and unplug from the mains supply.



CLEANING YOUR OIL FILLED RADIATOR

1. Always disconnect the heater from the mains supply before cleaning.
2. Clean the outsides of the heater by wiping with damp clothe and buff with a dry cloth.
3. DO NOT use waxes or polishes as these may react with the heater and cause discoloration.

STORING YOUR OIL FILLED RADIATOR

1. Save the box for off-season storage.
2. Clean the heater following the cleaning instructions above.
3. Remove the wheel base assemblies.
4. Place the heater, and wheel assemblies in the original box, and store in a cool and dry place.
5. If you choose to store your heater fully assembled be sure to cover it to protect it from dust.

WARRANTY CARD

This Oil Filled Radiator is warranted for one year against all manufacturing defects from the date of sale. In the event of any complaint, please contact your nearest Company Service Centre or call at our Toll Free no: 1800-1033-111.

This Warranty is valid only when...

1. The Oil Filled Radiator has not been opened or tempered with, by any unauthorized person.
2. The warranty card or cash memo duly signed by the authorized dealer are presented with the complaint.
3. The Oil Filled Radiator has been installed, used and maintained in accordance with the instructional manual.

This Warranty does not apply for...

1. Damages due to chipping, peeling, plating and denting.
2. Breakage or damage to components made out of Bakelite, Urea, ABS, SAN and such plastic, materials, rubber parts and cord.
3. Normal wear and tear of parts.
4. Damage resulting from accidents, mishandling or negligence on part of the customer.

Liability for consequential loss or damage is neither accepted nor implied.

S.NO: _____

CASH MEMO _____ DATE: _____

DEALER'S NAME AND ADDRESS: _____

OWNER'S NAME & ADDRESS: _____

Email: usha_care@ushainternational.com

Website: www.ushainternational.com

 <http://www.facebook.com/ushainternational>

USHA care

Toll free

1800-1033-111

USHA INTERNATIONAL LTD.

Plot No.15, Institutional Area, Sector 32, Gurgaon - 122 001 (Haryana) Tel : +91-124-4583100, Fax : +91-124-4583200

E-mail : corporate@ushainternational.com Website : www.ushainternational.com

Regd. Office : Surya Kiran Building, 19 Kasturba Gandhi Marg, New Delhi (India) Tel : +91 11 23318114 Fax : +91 11 23318118

ISO 9001: 2008
Certified Company



Fans • Sewing Machines • Home Appliances • Engines & Pumpsets • Electrical Motors & Pumps • Water Coolers & Dispensers
• Inverters • Cook Tops, Hobs & Hoods • Auto Components

USHA

® Registered Trademark and Copyright of USHA INTERNATIONAL LTD.



® Registered Trademark of USHA INTERNATIONAL LTD.