



INSTRUCTION MANUAL

ULTRASONIC HUMIDIFIER
Model – HU 3403



Dear Customer,

Congratulations!

Congratulations on the purchase of your new USHA Ultrasonic Humidifier HU 3403

Innovatively designed, using only the highest quality material and components, your Usha Ultrasonic Humidifier HU 3403 is designed for years of trouble free performance.

The USHA Ultrasonic Humidifier promotes a comfortable and healthy lifestyle. It automatically controls the humidity level according to the chosen setting. If the air gets too dry, it switches on to reinstate the desired humidity level, switching off automatically thereafter. The humidifier comes equipped with a rotating water disc filter which traps germs and other harmful substances in the water tray and emits only ultrafine and clean moisture into the air. USHA's Ultrasonic Humidifier also consists of an in-built demineralisation cartridge which converts hard water into soft water.

Please read this Instruction Manual carefully before using and keep it Cautiously after reading for future reference.

Best Wishes

ABOUT HUMIDIFIER

A humidifier is a device that increases humidity in a room. A Comfortable Indoor atmosphere is achieved at a relative humidity of between 40 and 60%. It acts as a moisturising agent by relieving dryness and maintaining a level of comfort during dry winters.

Your appliance automatically controls the humidity level according to your chosen setting. If the air is too dry, the unit will automatically switch on. As soon as the desired humidity level is reached, it will automatically switch off.

Excessively low humidity can cause health problems such as dry throats and noses, chapped lips and other respiratory diseases. Low humidity can also affect wooden furniture and carpets, causing shrinkage and loose joints. Books and paper may also shrink, warp and become increasingly brittle.

Benefits of Humidification:

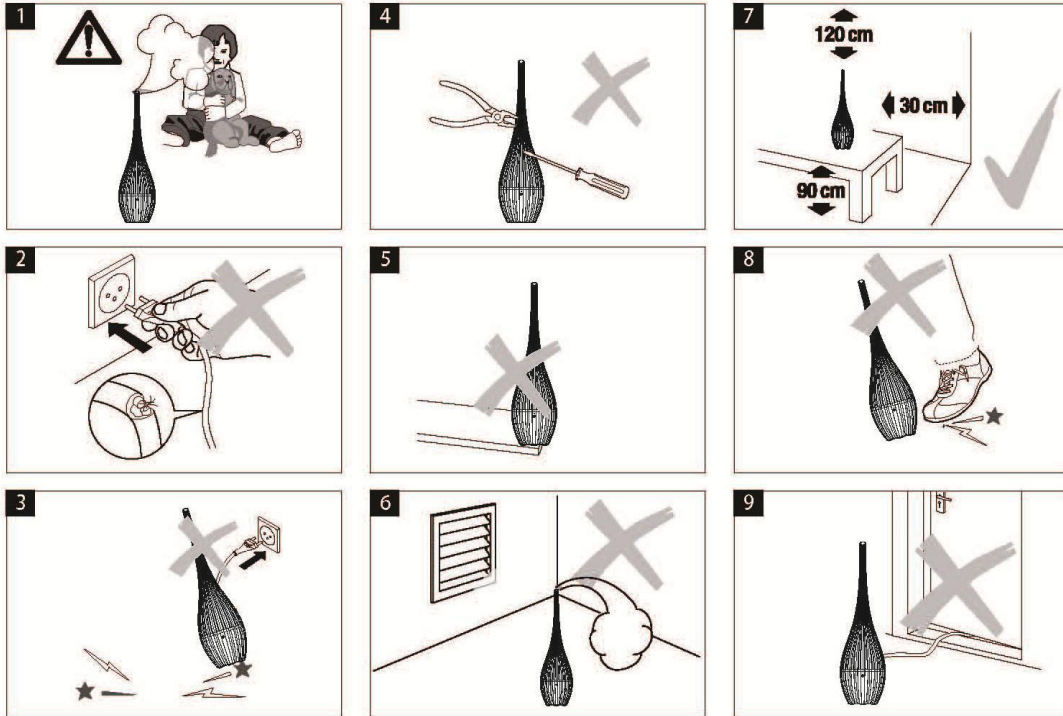
- 1) Rooms stay clean and germ-free.
- 2) Makes indoor air more pleasant and comfortable.
- 3) Ultrafine water particles prevent books, wallpapers and carpets from getting wet and mouldy.
- 4) Prevents drying out of mucous membrane, chapped lips and stinging eyes.

IMPORTANT PRECAUTIONS

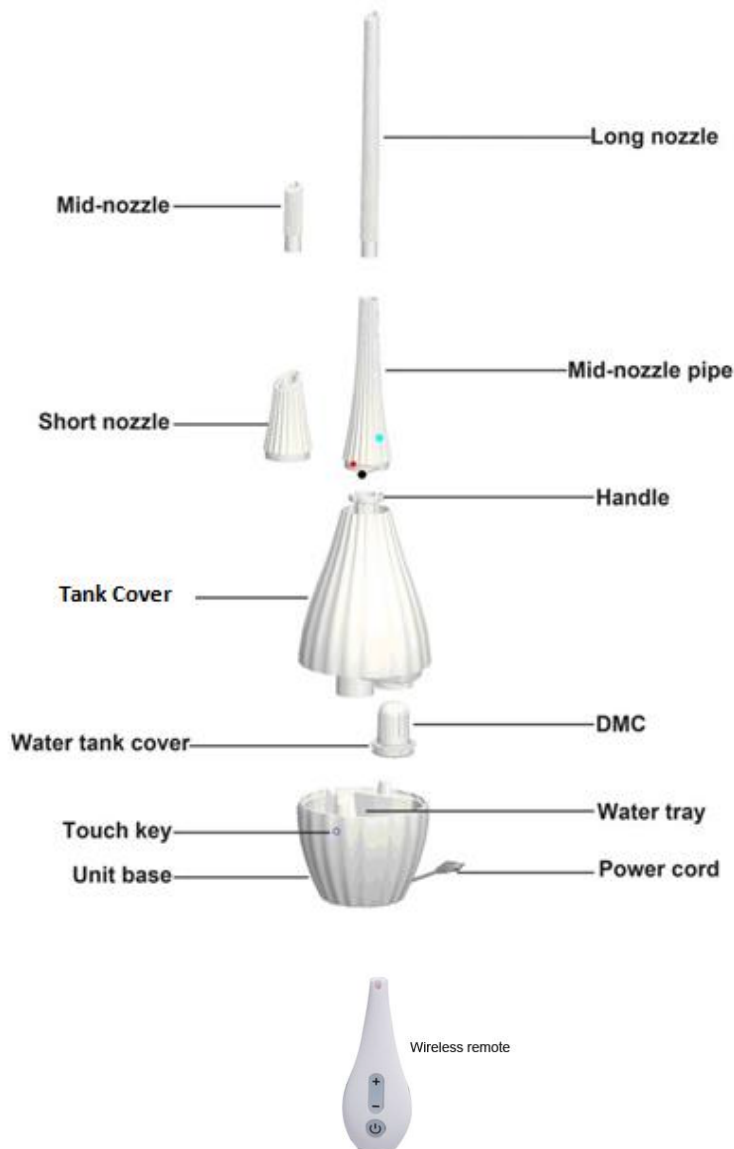
For safety purpose you should read the instructions carefully before using the appliance for the first time and follow them. Save the instructions for future reference.

- Please use suitable voltage and frequency (220-240V AC, 50Hz).
- Please consider the load capacity of your home electricity when you start to use this unit.
- Only use the appliance indoors .Using the appliance for a purpose for which it is not intended could pose a serious hazard to health.
- Children should be supervised to ensure that they do not play with the Appliance.
- Persons who are unfamiliar with the operating instructions, as well as children and persons under the influence of medication, alcohol or drugs are not permitted to operate the appliance, or are only permitted to operate it under supervision.
- Never use the appliance if there is any damage to the appliance or cable (2), after malfunction has occurred, after the appliance has been dropped (3) or damaged in any other way.
- Repairs to electrical appliances may only be carried out by authorised service engineers Improper repair work can pose a considerable hazard to the user.
- Disconnect the appliance from the mains power before filling/emptying the water tank, before cleaning, before assembling/dismantling of individual parts and before moving the appliance.
- **Do not reach inside the nebulizer apace during operation. The high frequency oscillation causes the membrane to become hot.**
- Never pull the plug from the mains socket by the cable or with wet hands.
- Always place the appliance on a dry, level surface.
- Do not place the appliance directly on the wooden floor/carpet or next to heating appliance. If the mist comes in contact with the wooden floor/carpet before it has fully evaporated, the surface could be damaged. We do not accept any liability for damages due to the incorrect placement of the unit.
- The unit should be placed in an elevated position , e.g. on a table, chest, etc.
- Do not pour water into the mist outlet of the appliance.
- Do not immerse the main body in water or other liquids.
- Position the appliance where it cannot be easily knocked over
- Always disconnect from the mains power when not in use.
- Do not run the power cord under a carpet or other objects. Position the appliance so that you will not trip over the cord.
- Do not use the appliance in areas where combustible materials, gases or vapors are present.
- Do not expose the appliance to rain, and do not use it in damp locations.
- Do not insert foreign objects in the device.
- Do not block the air intake or mist outlet.
- Do not sit, stand or place any heavy objects on the appliance.
- To protect health safety and proper humidifier function use only clean, contamination-free, cold, fresh tap water in your humidifier. If your water source is contaminated or if your are uncertain of its safety use distilled water. In addition, it is advised to clean and maintain your humidifier in a timely manner as instructed in this manual.
- The use of fragrances, such as essential oils, water conditioners and aromas will damage our appliance! Appliance that is damaged by such additives will not be covered under warranty.

- The high frequency vibrations cannot be heard by humans or animals, and are completely safe.



PRODUCT DETAILS



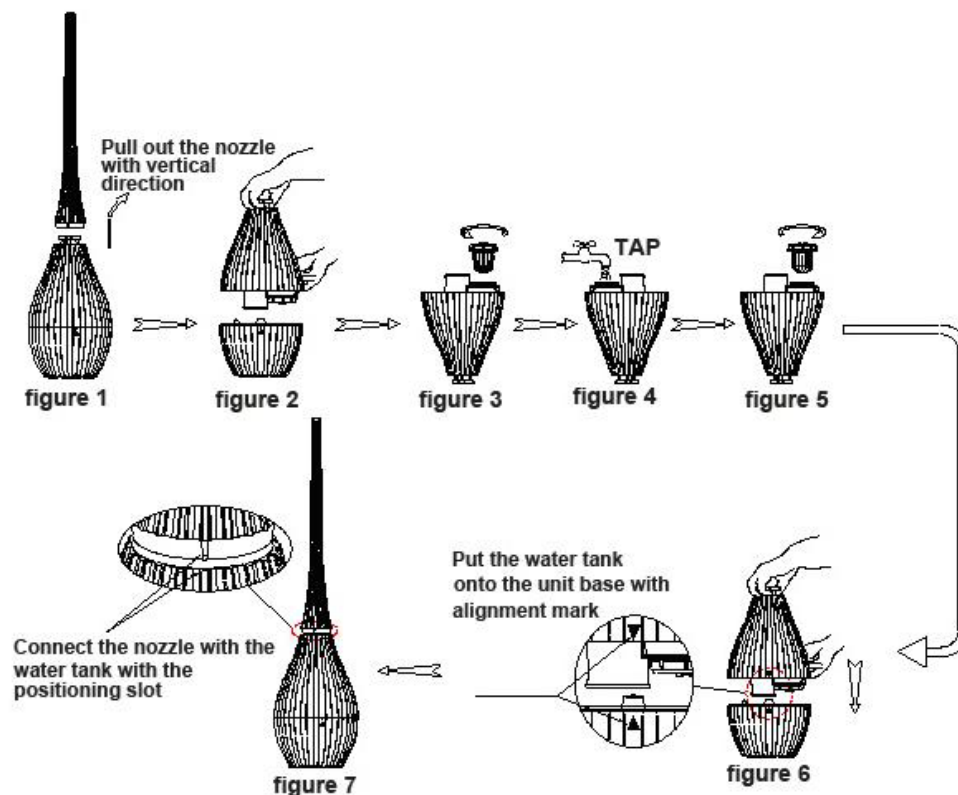
DEMINERALIZATION CARTRIDGE

- Your humidifier is not designed for water which has passed through a water softener which uses a salt. The humidifier's de-calcification cartridge cannot absorb the salt which results in a white precipitate forming inside the appliance. If a white precipitate should form anyway, the capacity of the de-calcification cartridge has been exhausted. This can occur sooner or later depending on the hardness of the water. In this case, please replace the de-calcification cartridge.
- We recommend that you do not use the appliance if your water hardness is near 100 TDS.
- Soak the de-calcification cartridge in a water bath 1 hour before the first use; the granules have to absorb water to reach high performance.



INSTALLATION INSTRUCTIONS

1. Add Water and assembly

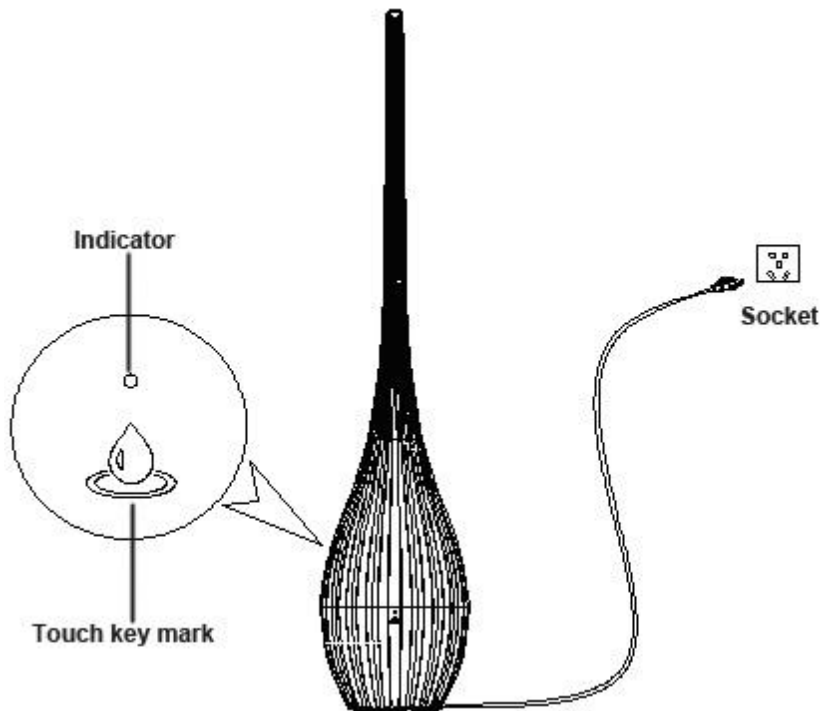


- Put the product on a flat surface or table, and pull out the nozzle with vertical direction, figure1;
- Lift the tank cover(refer figure 2), rollover the DMC Cover, and loosen the DMC cover in anticlockwise direction, (figure 3), put the water tank under the tap, figure4, filled with water.
- Fix the DMC Cover in clockwise direction, (figure 5); you need check whether there is a seal ring and whether it is in the internal slot.
- Put the water tank onto the unit base with alignment mark slowly, figure 6.; When you listen to the gurgle, it means there is water flowing into the water tray. Remark: If you don't listen to the gurgle, please lift the DMC cover and put the tank cover onto the unit base slowly times until listening to the gurgle.
- Connect the nozzle which you want with the water tank, figure 7; when connecting the nozzle, please take care the positioning slot.


OPERATING INSTRUCTIONS


- Checking before turning on
Please check whether the unit is on the flat place, then check whether there is water drop on the surface of unit, power cord and plug. If yes, please dry them first, and then you can do the next step
- Connecting with the power

Please wait for 3-5mins after putting the water tank on the base of unit. Then make sure the plug is inserted into the socket completely. On turning on ,the apparatus will make sound ; it means standby .






3. Turn on and adjust the mist volume

When you touch  first using, you will listen to “Do”. It means the unit starts work; the mist volume is lowest mode which is default mode.

If touching for 1 second or longer, the musical scale will change from “DO RE MI FA SO LA SI DO” in 0.5Hz. It means the mist volume gets bigger and bigger. From the musical scale “Do” to “Do” as a cycle, it means the mist volume is max.. If you continue to keep your finger on  for another 1 second then it will start to reduce the mist volume and the musical scale will change from “DO SI LA SO FA ME RE DO”.

The indicator change from Blue to White of color gradients means mist volume gets bigger and bigger. If the indicator changes from White to Blue of color gradients, it means the mist volume gets smaller

When the unit is on standby, if you touch  then leave your finger from  within 1 second. You will listen to the quick musical scale “MI RE DO” then shut down at once. If your finger stays on  for more than 1 second, the mist volume will change from low to high then high to low with cycle change till your move your finger

Memory Mode

- Appliance can remember your last setting when you turn it off without unplugging the power supply.
- On Switching on the appliance again it will start from your last setting.
- Settings will reset if you unplug the power supply.

4. Wireless Remote Operation

There is a wireless remote for this unit. You can control this unit with 20 meters range. There are “On/Off”, “+” and “-” three keys.

You can turn on/turn off the unit with “On/Off” Key. You can increase the mist volume per mode by pressing “+”. If you press constantly, you can change the mist volume to the Max. You can reduce the mist volume per mode by pressing “-”. If you press constantly, you can change the mist volume to lowest.

5. Water Scarcity Protection

The unit will stop working in 5-20mins after the water tank is empty with a warning sound of “BEEBEE”. If you don’t refill the water tank in time, the indicator will turn red and flash until water is refilled.

6. Close Operation

- Turn off the humidifier and make sure it stops working.
- Unplug the plug from the socket.
- Remove the water tank and turn off the tank cover to pour the water. Then Clean it.
- Dry the parts and store.

TECHNICAL DATA

Model No.	HU 3403
Power Supply	230V, 50HZ Single Phase
Wattage	35W
Safety Features	Water Scarcity protection Auto Turn off Demineralization Cartridge
Max. Water Tank Capacity	4.5L
Noise (dB)	≤ 40
Max Mist Volume (ml/h)	400
No of Humidity Settings	8

WARRANTY CARD

This appliance is warranted for 1 year against all manufacturing defects from the date of sale. In the event of any complaint, please contact USHA Care at Toll Free No. 1800 1033 111.

The warranty is valid only when:

- 1) The appliance has been used and maintained in accordance with the instruction manual.
- 2) The warranty card and cash memo duly signed by the authorized dealer are presented with the complaint.
- 3) The appliance has not been opened or tampered with, by any unauthorized person.

This warranty does not apply for:

- 1) Damages due to chipping, peeling, plating and denting.
- 2) Breakage or damage to components made out of Bakelite, Urea, ABS, SAN and such plastic materials, rubber parts and cord.
- 3) Normal wear and tear of parts.
- 4) Damage resulting from accidents, mishandling or negligence on part of the customer.

Liability for consequential loss or damage is neither accepted nor implied.

S.NO: _____

CASH MEMO _____ DATE: _____

DEALER'S NAME AND ADDRESS: _____

OWNER'S NAME & ADDRESS: _____

USHA care™

Toll free

1800-1033-111

usha_care@ushainternational.com

USHA INTERNATIONAL LTD.



Plot No.15, Institutional Area, Sector 32, Gurgaon - 122 001 (Haryana) Tel : +91-124-4583100, Fax : +91-124-4583200

E-mail : corporate@ushainternational.com Website : www.ushainternational.com

Regd. Office : Surya Kiran Building, 19 Kasturba Gandhi Marg, New Delhi (India) Tel : +91 11 23318114 Fax : +91 11 23318118

ISO 9001:2009
Certified Company

Fans • Sewing Machines • Home Appliances • Engines & Pumpsets • Electrical Motors & Pumps • Water Coolers & Dispensers
• Inverters • Cook Tops, Hobs & Hoods • Auto Components

USHA

Registered Trademark and Copyright of USHA INTERNATIONAL LTD.



Registered Trademark of USHA INTERNATIONAL LTD.

India

e-mail:

Usha_care@ushainternational.com